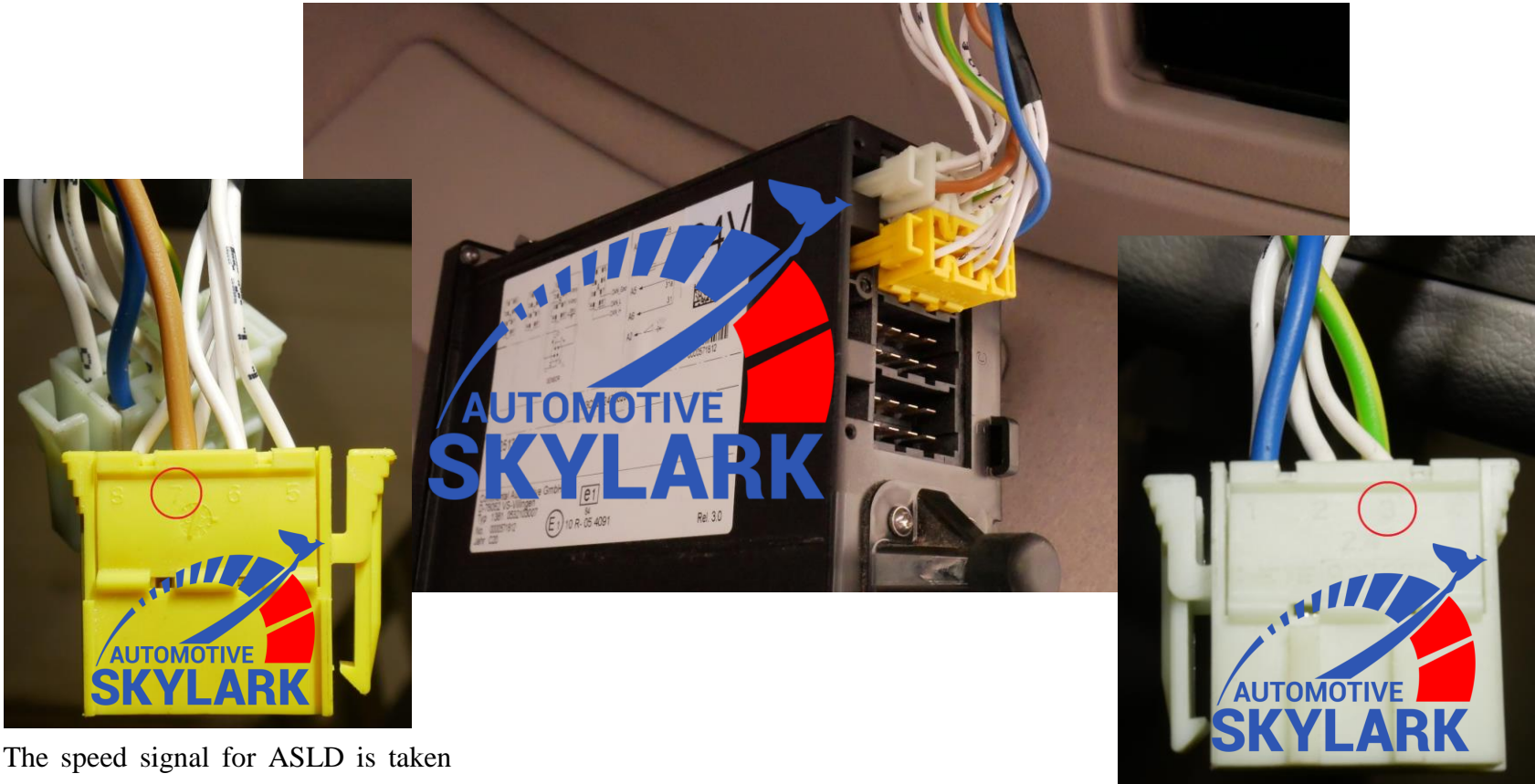


# Technological instruction of the installation of the vehicle ASLD (NC80) at «SITRAK C7H 480».



## Connecting ASLD power and speed signal

The ASLD (+) power supply and the speed signal (SIG) are taken from the terminal blocks of the tachograph.

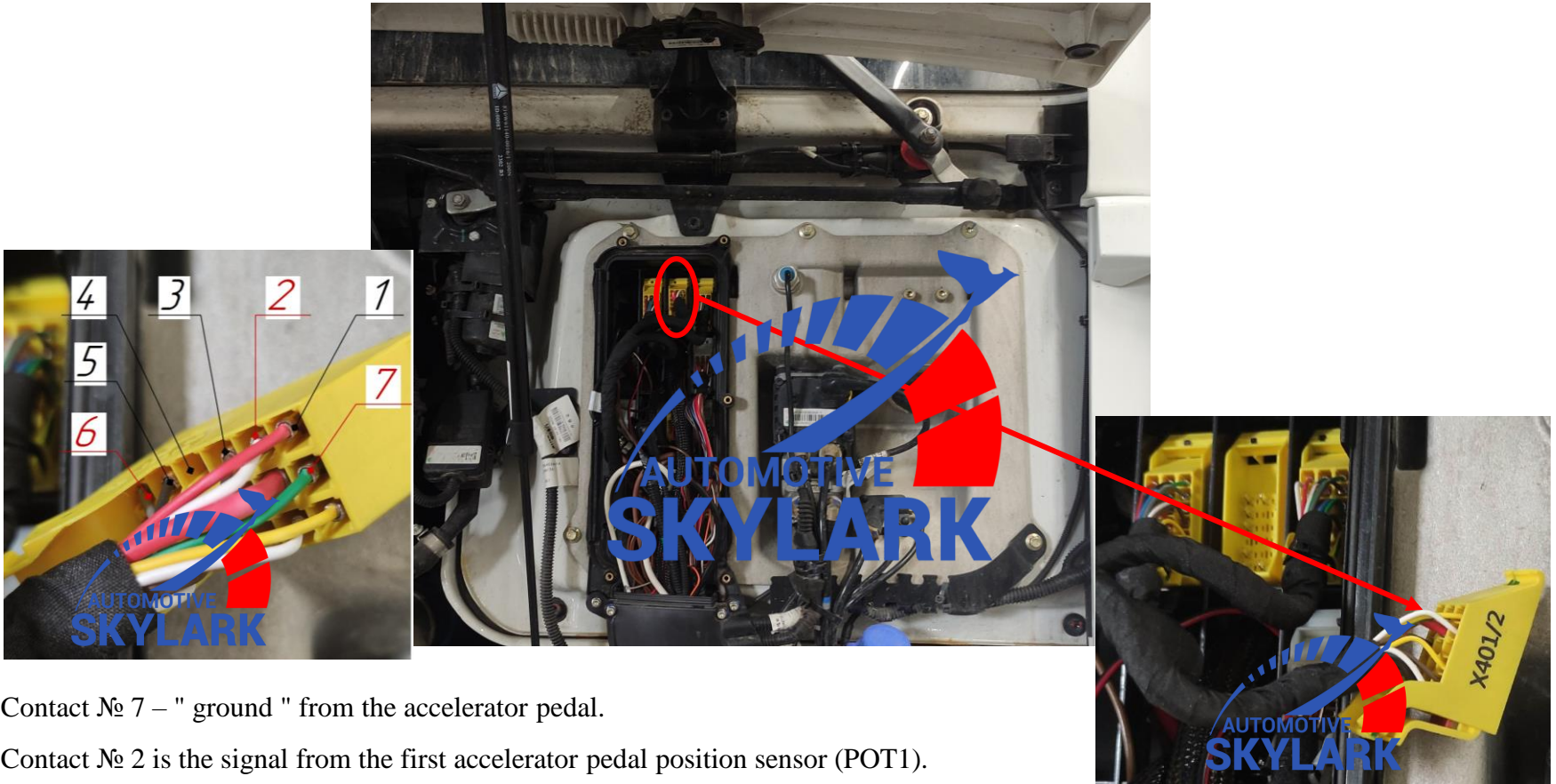


The speed signal for ASLD is taken from the (7) pin of the yellow connector.

The ASLD (+) power supply is taken from the (3) pin of the white connector.

## Connecting ASLD power and speed signal

The accelerator pedal signals are taken from the connector block located under the hood from the terminal block (X401/2).



Contact № 7 – " ground " from the accelerator pedal.

Contact № 2 is the signal from the first accelerator pedal position sensor (POT1).

Contact № 6 is a signal from the second accelerator pedal position sensor (POT2).

## Connecting power and signals to ASLD

---

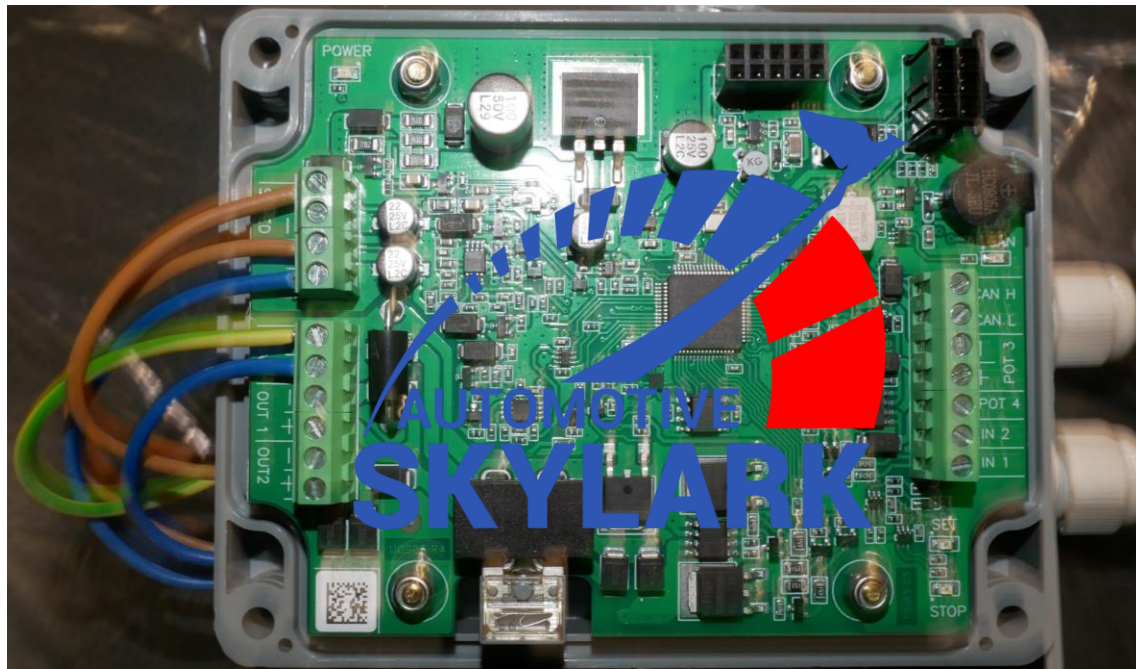
Connect the wire from pin (2) of terminal X401/2 to «*POT1*».

Connect the wire from pin (6) of terminal X401/2 to «*POT2*».

Connect the wire from pin (7) of terminal X401/2 to «*BAT (-)*».

Connect the wire from the contact (3) of the white terminal of the tachograph to the «*BAT (+)*».

Connect the wire from the contact (7) of the yellow terminal of the tachograph to «*SPEED(SIG)*».



## Configuration settings in the configurator for this car.


Configurator V5.71.00e Zhavoronok XXI vek

**Connection** | **Speed limit device**

Device S/N: 78706 Expert mode

**Status**

On-board voltage	24,0 V	Threshold speed	90,0 km/h
Voltage at pedal channel 1 (POT1)	1,10 V	Current speed	0,0 km/h
Voltage at pedal channel 2 (POT2)	0,56 V	Limitation 1 -	No



**Settings**

**General** | **Limitations** | **Kickdown** | **Inputs** | **Beep** | **CAN** | **Save**

Speed input: without pull-up (highlighted with a red box) Filter of input speed: 20

Type of acceleration pedal: 3 - POT2 = POT1/2

Coefficient W: 6000 imp./1000 m OUT 1: valve

Numbers of limitations: 1 OUT 2: signaling

Smoothness of regulation:

Speed limit slowdown: 0,0 sec

Speed limit switch-off slowdown: 0,0 sec

Read settings Save settings

OK Exit

The «Coefficient W» for each car is selected individually.

## Configuration settings in the configurator for this car.

Configurator V5.71.00e Zhavoronok XXI vek

Connection Speed limit device

Device S/N: 78706 Expert mode

Status

On-board voltage	24,0 V	Threshold speed	90,0 km/h
Voltage at pedal channel 1 (POT1)	1,09 V	Current speed	0,0 km/h
Voltage at pedal channel 2 (POT2)	0,56 V	Limitation 1 -	No

AUTOMOTIVE SKYLARK

Settings

General Limitations Kickdown Inputs Beep CAN Save

High priority

Limitation 1

Speed limit switch-on thresh	90,0 km/h	Voltage at pedal channel 1 (POT1)	1,20 V
Speed limit switch-on pre-threshold	88,0 km/h	Voltage at pedal channel 1 (POT1)	2,00 V
Speed limit switch-off threshold	87,0 km/h		
Signaling the threshold	90,0 km/h		
Speed limiter switch-on delay	0,0 sec		
Limitation Switching Delay from Inputs and Sinals	0,0 sec		

Limitation from the geodata external

Read settings Save settings

OK Exit

This field specifies the voltage that is transmitted to the engine control unit at a preliminary speed limit and at full speed limit. They are set individually for each car.

Attention! The set voltage must not be less than the value on POT 1 when the accelerator pedal is not depressed.